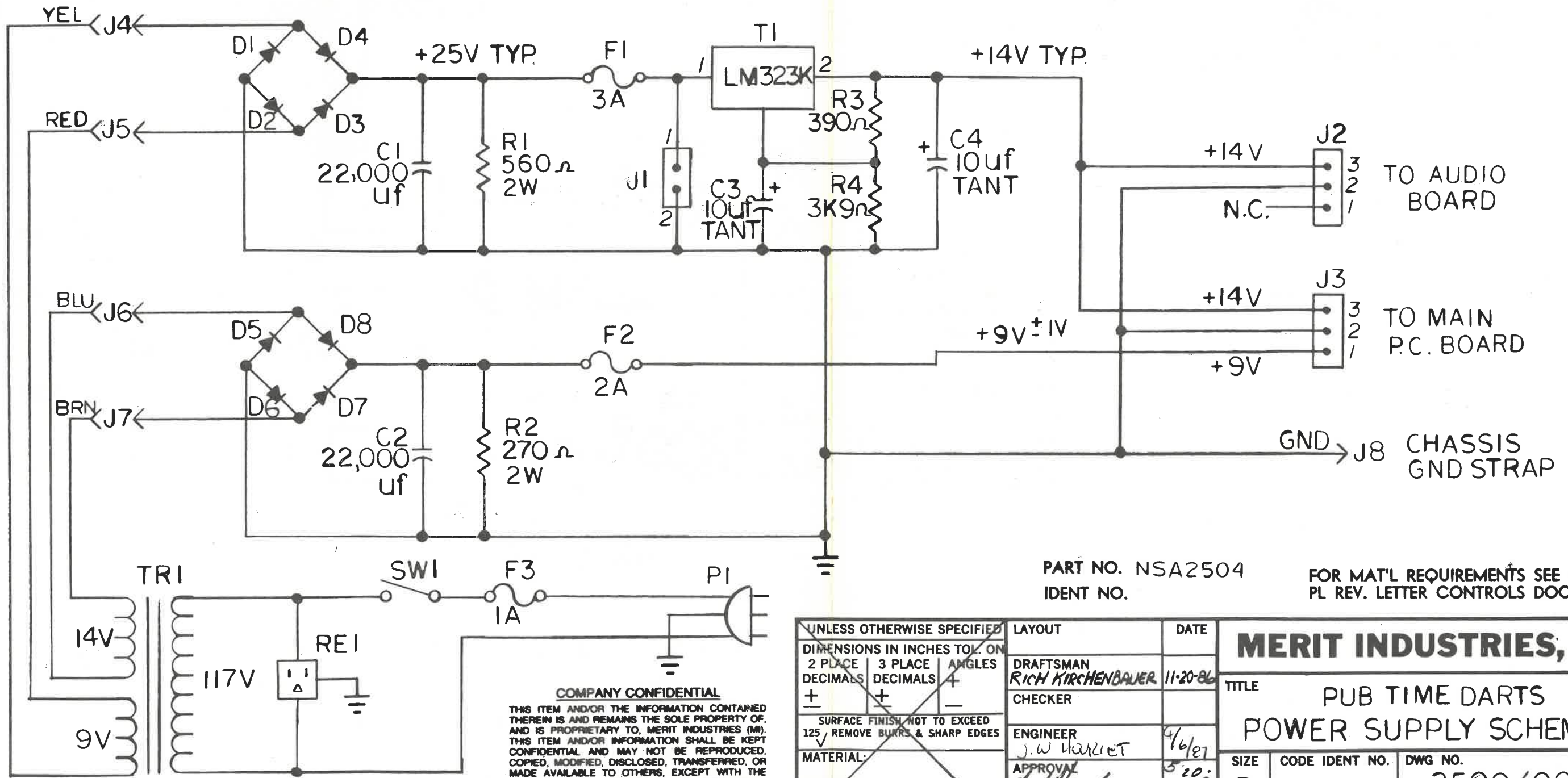


REVISIONS						
ZONE	LTR	ECN. NO.	DESCRIPTION — SEE. ECN	CHK	DATE	APPROVED
	Ø		INITIAL RELEASE			



PART NO. NSA2504  
IDENT NO.

FOR MAT'L REQUIREMENTS SEE PL.  
PL REV. LETTER CONTROLS DOCUMENT.

**COMPANY CONFIDENTIAL**  
THIS ITEM AND/OR THE INFORMATION CONTAINED THEREIN IS AND REMAINS THE SOLE PROPERTY OF, AND IS PROPRIETARY TO, MERIT INDUSTRIES (MI). THIS ITEM AND/OR INFORMATION SHALL BE KEPT CONFIDENTIAL AND MAY NOT BE REPRODUCED, COPIED, MODIFIED, DISCLOSED, TRANSFERRED, OR MADE AVAILABLE TO OTHERS, EXCEPT WITH THE PRIOR WRITTEN CONSENT OF MI. THIS ITEM AND/OR ALL COPIES, IF ANY, ARE SUBJECT TO RETURN TO MI.

UNLESS OTHERWISE SPECIFIED		
DIMENSIONS IN INCHES TOL. ON		
2 PLACE DECIMALS	3 PLACE DECIMALS	ANGLES
±	±	±
SURFACE FINISH NOT TO EXCEED		
125 REMOVE BURRS & SHARP EDGES		
MATERIAL:		
THREADS: EXT. CL 2A, INT. CL 2B		
COMMODITY CODE		

LAYOUT	DATE
DRAFTSMAN RICH KIRCHENBAUER	11-20-86
CHECKER	
ENGINEER J.W. HANNET	4/6/87
APPROVAL <i>[Signature]</i>	3-20-87

<b>MERIT INDUSTRIES, INC.</b>		
TITLE PUB TIME DARTS POWER SUPPLY SCHEMATIC		
SIZE B	CODE IDENT NO.	DWG NO. 2500/0038
SCALE	WEIGHT	SHEET OF

DWG. NO. 2500/0038