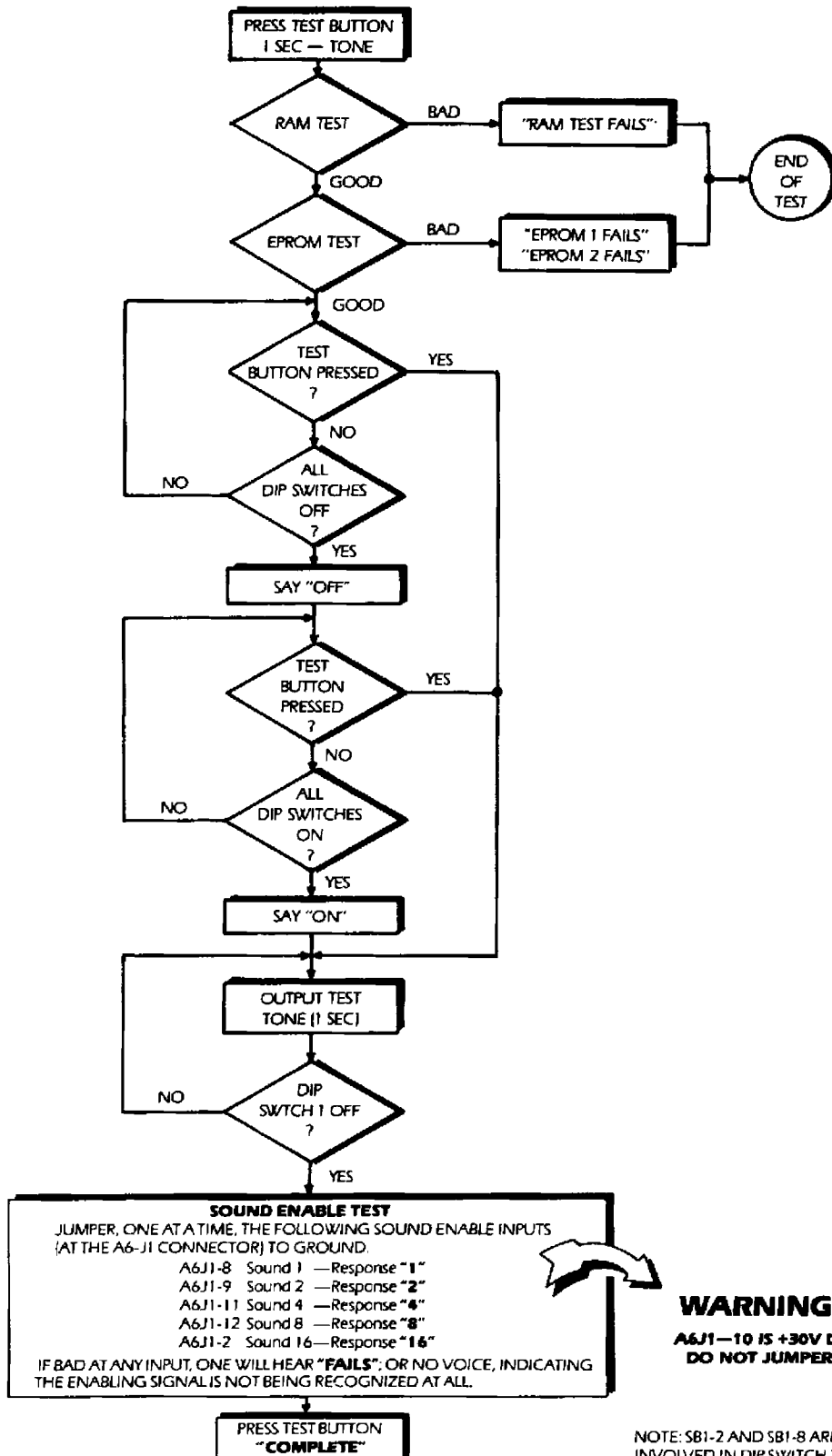


# IX. GENERAL INFORMATION

## E. SOUND/SPEECH BOARD (A6) TEST

1. Game must be in game over mode to initiate test.
2. Pressing the test button on the sound board will initiate the test.
3. The test must be completed to enable the sound board or game power must be turned on/off.
4. Words in bold print with quotation marks are the voice responses the sound board issues at specific points in the test.



NOTE: SB1-2 AND SB1-8 ARE NOT INVOLVED IN DIP SWITCH TESTS.