

# BULLETIN

from the ATARI CUSTOMER SERVICE DEPARTMENT

B- A004

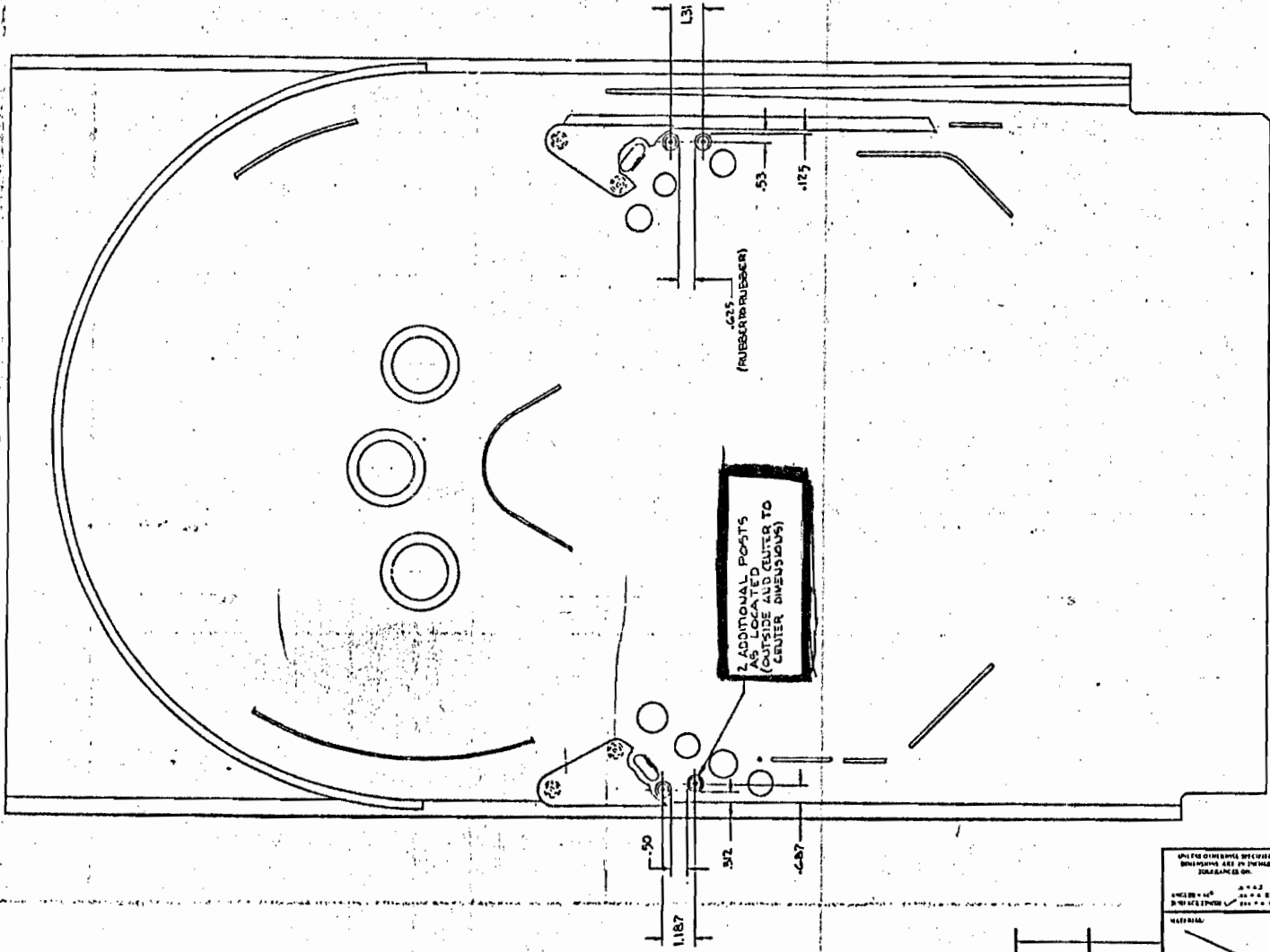


## THE ATARIANS<sup>TM</sup>

Two posts are being supplied to increase game time and the percentage of replays. Place these posts below the lower posts of target three and eight as illustrated on the drawing on the back of this page.

BB/kc

NOTE: THIS SET OF DRAWINGS IS THE PROPERTY OF ATARI INC. IT IS TO BE USED ONLY FOR THE PROJECT SPECIFICALLY IDENTIFIED HEREIN. ANY REUSE OR MODIFICATION OF THESE DRAWINGS WITHOUT THE WRITTEN PERMISSION OF ATARI INC. IS STRICTLY PROHIBITED. THE DRAWING IS NOT TO BE USED AS A BASIS FOR CONSTRUCTION OR AS A BASIS FOR LIABILITY. THE DRAWING IS NOT TO BE USED AS A BASIS FOR LIABILITY. THE DRAWING IS NOT TO BE USED AS A BASIS FOR LIABILITY.



2 ADDITIONAL POSTS AS LOCATED AS OUTSIDE AID CENTER TO (CENTER DIMENSION)

OUTSTANDING ECNs	

UNLESS OTHERWISE SPECIFIED DIMENSIONS ARE IN INCHES UNLESS NOTED OTHERWISE. UNLESS NOTED OTHERWISE DIMENSIONS ARE IN INCHES UNLESS NOTED OTHERWISE. UNLESS NOTED OTHERWISE DIMENSIONS ARE IN INCHES UNLESS NOTED OTHERWISE.	DO NOT SCALE DRAWING	ATARI INCORPORATED 1400 Winchester Boulevard Los Gatos, California 95030
	DESIGNED BY: A. J. J. DRAWN BY: FELIX/MLR (3/10/77) DATE:	
MATERIAL:	FINISH:	ADDITIONAL POST'S LOCATION
PARTS LIST:	CHECKED BY:	SIZE: D DRAWING NO: 007861
APPROVED BY:	DATE:	SCALE: 1/2" = 1"

NOTES: UNLESS OTHERWISE SPECIFIED

8 7 6 5 4 3 2 1