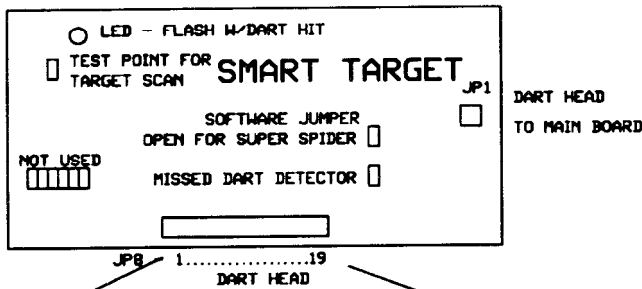
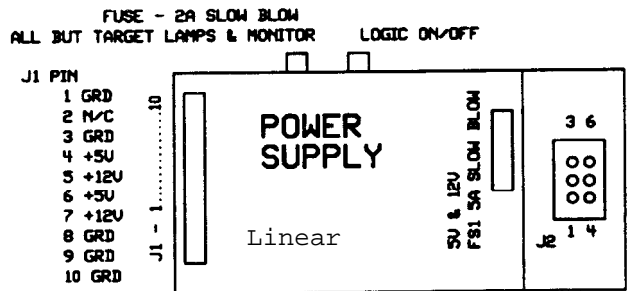
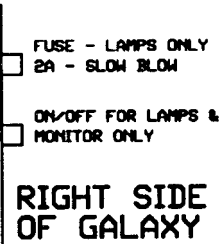


A - ONE GAME ON THE NET MUST HAVE BOTH SWITCHES 1 AND 2 CLOSED. ALL OTHERS MUST HAVE SWITCHES 1 AND 2 OPEN.

B - THE TWO GAMES AT THE END OF THE NET CABLES MUST HAVE SWITCH 3 CLOSED.

C - SWITCH 4 WILL ALLOW THE MODERN SOUND TO PLAY THROUGH THE GAME SPEAKER FOR TEST PURPOSES.



J2 PIN

- 1 RETURN FOR LAMPS & MONITOR
- 2 MONITOR & SERVICE OUTLET
- 3 +5U
- 4 LAMPS (VARIABLE)
- 5 GROUND TO COIN DOOR
- 6 TARGET LAMP SIGNAL FROM MAIN BOARD

SWITCH MATRIX TEST

IS = INNER SINGLE
T = TRIPLE
D = DOUBLE
OS = OUTER SINGLE

THE JUMPER JP11 (ON THE SMART TARGET) MUST BE REMOVED FOR THIS CHART TO BE CORRECT. OTHERWISE JP8 PINS 6,7,8 & 9 WILL BE REVERSED.

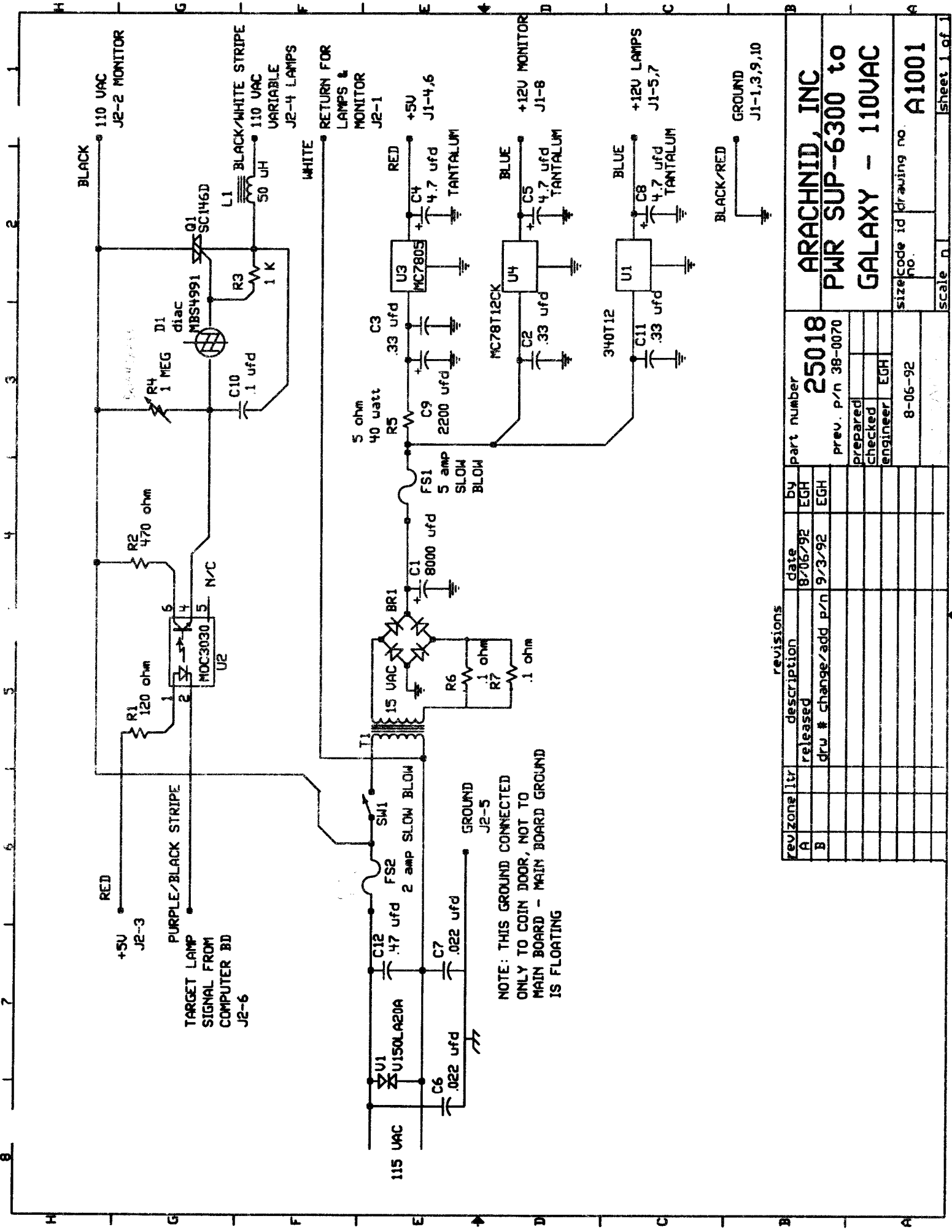
TO TEST, REMOVE SWITCH MATRIX LEAD FROM JP8. THEN SHORT TWO PINS TOGETHER AND RELEASE. THE LED SHOULD FLASH AND THE GAME SHOULD SCORE.

JP8 PIN#	1	2	3	4	5	14	15	16	17	18	19
6	IS10	IS15	IS2	IS17	IS3	XXX	IS13	IS4	IS18	IS6	IS1
7	T10	T15	T2	T17	T3	XXX	T13	T4	T18	T6	T1
8	OS10	OS15	OS2	OS17	OS3	XXX	OS13	OS4	OS18	OS6	OS1
9	D10	D15	D2	D17	D3	XXX	D13	D4	D18	D6	D1
10	IS11	IS8	IS16	IS7	IS19	IS0	IS14	IS9	IS12	IS5	IS20
11	T11	T8	T16	T7	T19	O25	T14	T9	T12	T5	T20
12	OS11	OS8	OS16	OS7	OS19	XXX	OS14	OS9	OS12	OS5	OS20
13	D11	D8	D16	D7	D19	XXX	D14	D9	D12	D5	D20

LAMPS

TARGET LAMPS - 75 WATT MAXIMUM
60 WATT RECOMMENDED

LAMPS IN SELECT & PLAYER CHANGE SHOULD BE GE658 - LAMPS IN COIN DOOR CAN BE GE658 OR GE161



rev	zone	ltr	description	date	by	part number
A			released	8/06/92	EGH	25018
B			dra # change/add p/n	9/3/92	EGH	prev. p/n 38-0070
						prepared
						checked
						engineer
						EGH
						8-06-92
						size code id drawing no.
						A1001
						Scale n
						Sheet 1 of 1

ARACHNID, INC
PWR SUP-6300 to
GALAXY - 110VAC

POWER SUPPLY CHASSIS ASSEMBLY

00-8034 (110V VERSION)

FIG.#	ITEM #	PART #	DESCRIPTION
27	1	28118	FUSE,5A,250V,SLOW BLOW
27	1	25922	FUSE CLIPS,P.C. MOUNT (2)
27	2	18077	REGULATOR,5V - LM323K
27	2	19171	HEAT SINK TO3, #5684
27	3	28078	REGULATOR,12V,LM 340-12,TO-220
27	3	13705	HEAT SINK,#6072B
27	4	28144	HEAT SINK,SQUARE
27	4	33843	BRIDGE RECTIFIER,8A,200PIV
27	5	18107	RESISTOR,5 OHM,40W
27	6	27022	CONNECTOR,10 PIN
27	7	26996	CAPACITOR,.33MFD,100V (2)
27	8	21448	CAPACITOR,4.7MF,25V,TANTALUM (2)
27	9	30343	CAPACITOR,2200MFD,35V,ELECT,RADIAL
28	10	13849	TRANSFORMER,100V PRIMARY
28	10	34957	TRANSFORMER,115V PRIMARY
28	10	12739	TRANSFORMER,230V PRIMARY
28	11	15961	POWER CORD,12',USA
28	11	25974	POWER CORD,10',FRENCH/GERMAN
28	11	27084	POWER CORD,10',ENGLAND
28	12	22558	CAPACITOR,8900 MFD,25V
28	13	28128	PRINTED CIRCUIT BOARD ASSY, TOP
28	14	35587	CHASSIS,POWER SUPPLY
29	15	11473	CONNECTOR,6 PIN,CHASSIS MOUNT
29	16	22594	STRAIN RELIEF
29	17	19133	SWITCH,ON/OFF,ROCKER,SQUARE
29	18	19167	FUSE HOLDER,CHASSIS MOUNT
29	18	30349	FUSE,2.0A,250V,SLOW BLOW
29	19	24774	POTENTIOMETER,1 MEG OHM
30	20	12527	IC,MOC3030,OPTO ISOLATOR
30	21	30329	RESISTOR,120 OHM,1/4 W
30	22	31441	RESISTOR,180 OHM,1/4 W
30	23	16991	RESISTOR,1K,1/4 W
30	24	32559	CAPACITOR,.1MF,600V,DISK
30	25	31453	CAPACITOR, 1 UFD,400V (UNDERNEATH)
30	26	23668	CAPACITOR,.02 MFD,600V (2)
30	27	26062	VARIATOR,V150LA20A (110V UNITS)
30	27	12735	VARIATOR,V250LA20A (220V UNITS)
30	28	27172	TRIAC,SC-146D (UNDERNEATH)
30	29	13845	MBS4991,BI-DIRECTIONAL SWITCH
30	30	11629	INDUCTOR,50MH,3 AMP
30	31	32449	PRINTED CIRCUIT BOARD ASSY,BOTTOM
30	31	18005	PRINTED CIRCUIT BOARD ASSY,230V

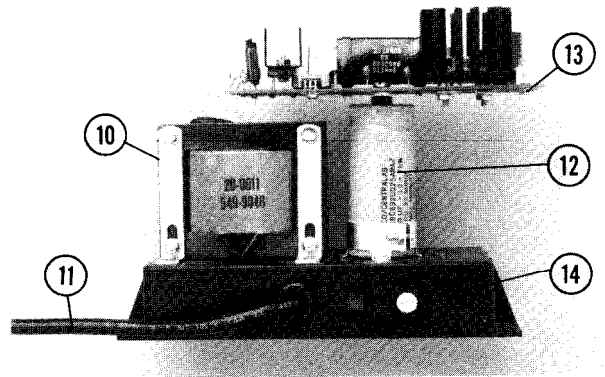


Figure 28

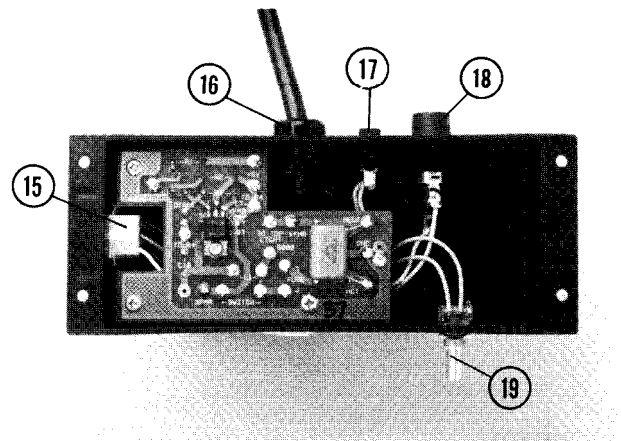


Figure 29

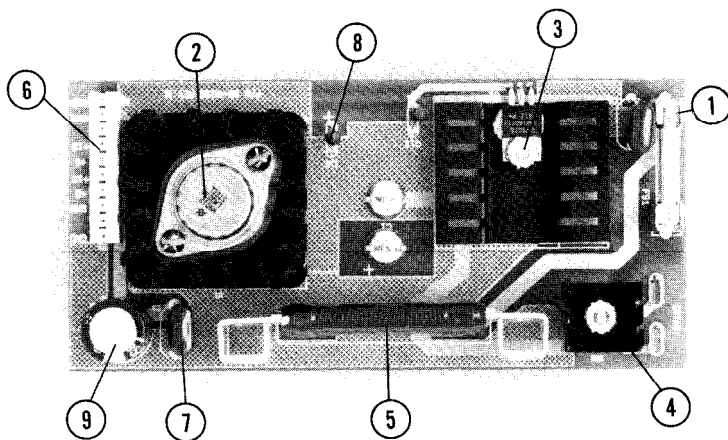


Figure 27

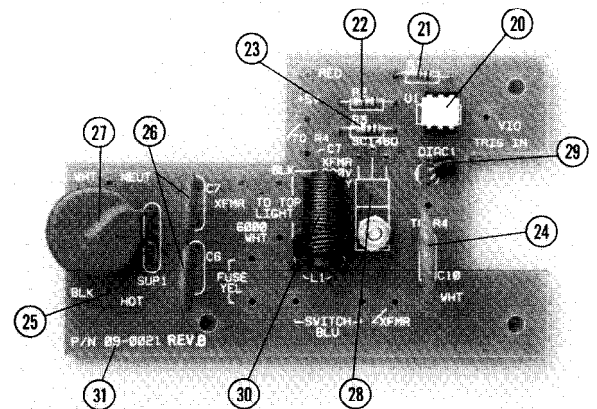


Figure 30