

The monarch 444 "single" coin chute

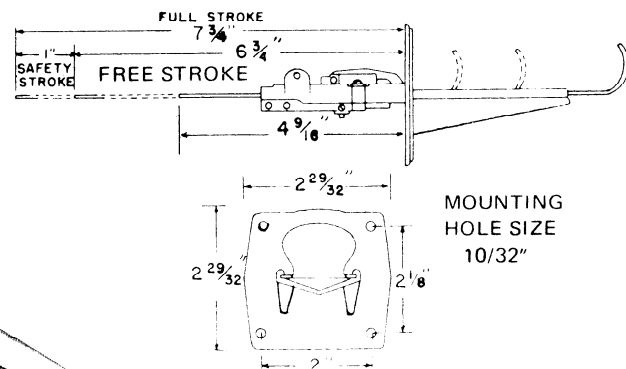
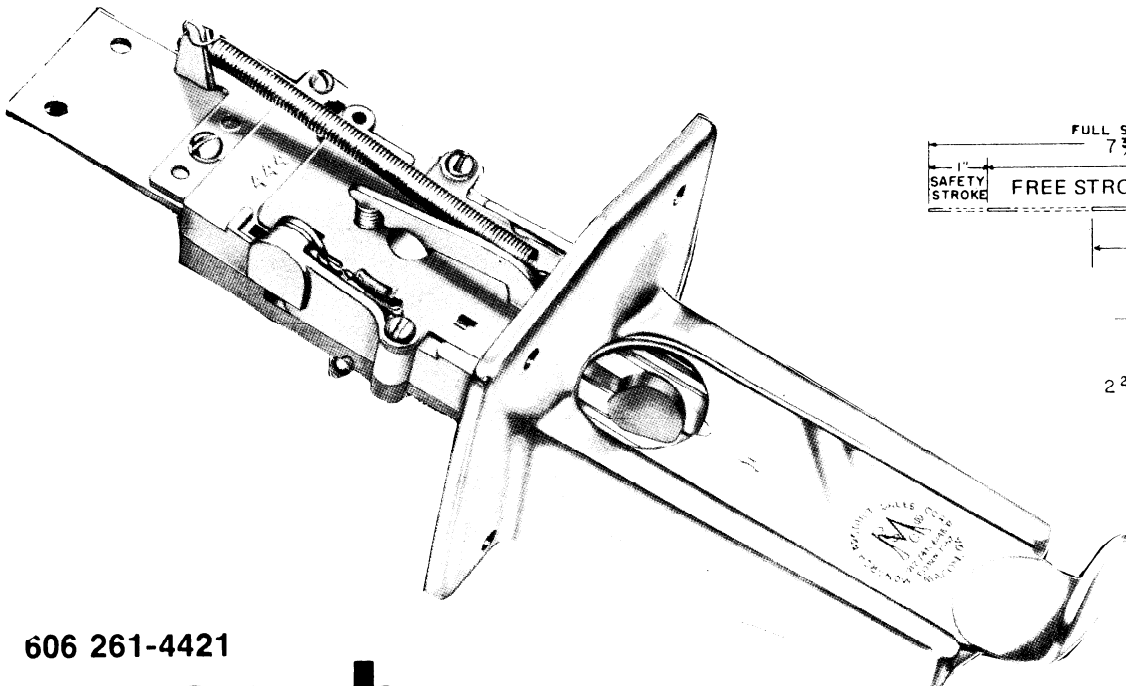
Made in America for Heavy Usage

Available in 1¢, 5¢, 10¢, 25¢ and for any Foreign
Coin up to the size of a U.S. Quarter

The model **444** is our standard, heavy duty, single coin chute. Its stroke, mounting hole positions and face plate dimensions are identical with the No. 1000 making it simple and convenient to interchange the two if desired.

The most durable and attractive coin chute on the market.

A normal life cycle to be about 100,000 operations, and a life of 200,000 is not unusual.



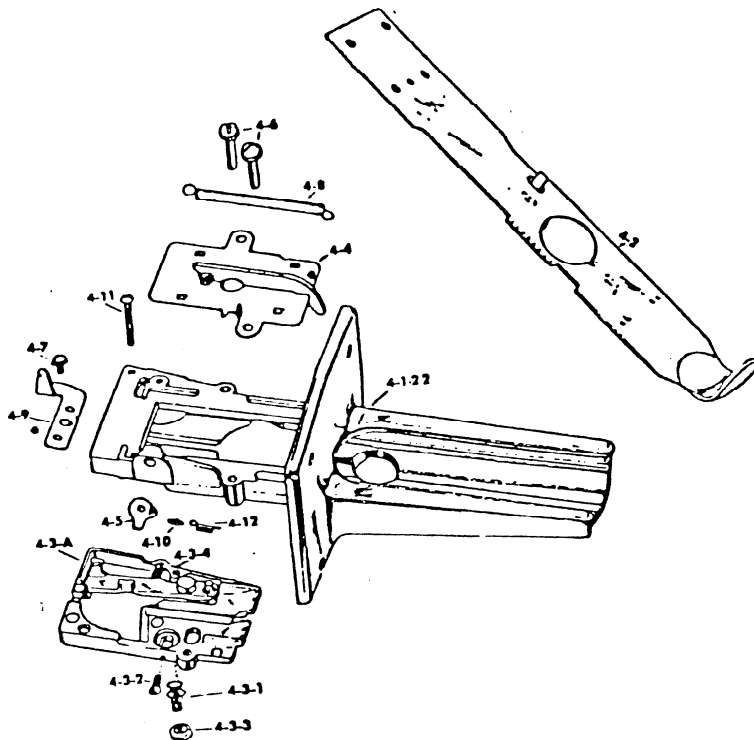
606 261-4421

monarch
product sales corp.

105 east 4th st. covington, kentucky 41011

444 PARTS LIST

| PART NO. | DESCRIPTION | PRICE |
|----------|---------------------------|--------|
| 4-1-22 | HOUSING | \$3.85 |
| 4-2 | SLIDE | 2.99 |
| 4-3-A | BOTTOM PLATE | 1.76 |
| 4-3-1 | GAUGING SCREW | .28 |
| 4-3-2 | ADJUSTING SCREW | .06 |
| 4-3-3 | HEX NUT FOR GAUGING SCREW | .06 |
| 4-3-4 | COIL SPRING FOR SIDE DOG | .10 |
| 4-4 | TOP PLATE ASSEMBLY | 1.65 |
| 4-5 | RATCHET DOG | .17 |
| 4-6 | SCREW FOR TOP PLATE | .06 |
| 4-7 | SCREW FOR SLIDE STOP | .06 |
| 4-8 | PULL BACK SPRING | .11 |
| 4-9 | SLIDE STOP | .35 |
| 4-11 | SCREW | .06 |
| 4-12 | RATCHET SPRING | .17 |



TO OBTAIN THE CORRECT PART FOR YOUR SPECIFIC CHUTE, ALWAYS SPECIFY:

- (1) COIN DENOMINATION
- (2) THE MAKE AND MODEL OF MACHINE

*Dismantling Instructions For No. 444 Chute

Disassemble the chute by removing the screws 4-7, 4-11, and the two 4-6 screws.

*CLEANING INSTRUCTIONS

All coin chutes should be dismantled and cleaned at least once a year. Dismantle the chutes and soak them in mineral spirits or a similar petroleum base solvent for two hours or more. Then brush the dirty parts with a clean, small paint brush to remove the loosened dirt. After cleaning, dry and reassemble the chutes, then spray with a silicone base lubricant, such as "Motion."

*ADJUSTMENT INSTRUCTIONS FOR 444 AND 592 COIN CHUTES

To adjust the No. 444 or No. 592 coin chute, loosen hex nut No. 4-3-3 (or C-3-3) and adjusting screw No. 4-3-2 (or C-3-2, by turning counterclockwise. Holding the coin chute at a level position, insert a coin of average wear and push the slide in until it is stopped by the side dog. Holding the slide in the stopped position, turn the adjusting screw, No. 4-3-2 (or C-3-2), clockwise until the side dog releases the slide. Then tighten the hex nut, No. 4-3-3 (or C-3-3), securely.

MINIMUM ORDER \$10.00

MONARCH PRODUCT SALES CORP.
105 East Fourth Street
P.O. Box 427
Covington, Kentucky 41011

859
Phone Number: ~~606~~ 261-4421
261-4422