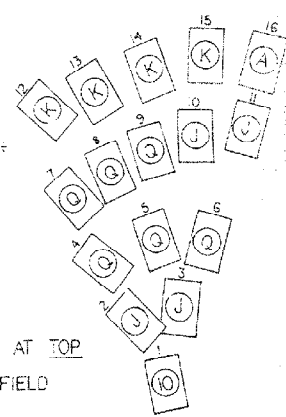


- 56 - A5J1-18 # 4 BUTTON
- 60 - A5J1-19 20,000 # 3 TARGET
- 57 - A5J1-17 WHEEL TARGET ARROW
- 12 - A5J1-23 10' DROP TARGET
- 67 - A5J1-14 Q'DROP TARGET (BOT.)
- 31 - A5J1-15 K' TARGET (2nd FROM BOT.)
- 15 - A5J1-16 40,000 SAUCER
- 78 - A5J1-28 80 HEARTS
- 50 - A5J1-24 L+R RET. LANE ARROW
- 75 - A5J1-25 WHEEL 50,000
- 91 - A5J1-26 SHUT AGAIN
- 53 - A5J1-27 2 X BONUS
- 41 - A5J1-1 # 5 BUTTON
- 43 - A5J1-9 40,000 # 3 TARGET
- 51 - A5J1-8 2 TARGET (RIGHT)
- 45 - A5J1-3 Q'DROP TARGET (3rd FROM TOP)
- 52 - A5J1-2 Q'DROP TARGET (2nd FROM BOT.)
- 32 - A5J1-10 A' TARGET
- 34 - A5J1-7 80,000 SAUCER
- 94 - A5J1-6 160 CLUBS
- 48 - A5J1-5 START WHEEL
- 65 - A5J1-11 WHEEL SPOTS CARD
- 35 - A5J1-4 N/U
- 61 - A5J1-12 3 X BONUS
- 30 - A5J1-13 240 DIAMONDS
  
- 43 - A5J3-26 # 5 BUTTON
- 36 - A5J3-25 60,000 # 3 TARGET
- 67 - A5J3-19 2 TARGET (MIDDLE)
- 13 - A5J3-17 Q'DROP TARGET (2nd FROM TOP)
- 25 - A5J3-16 DROP TARGET ARROW SPECIAL
- 38 - A5J3-23 K' TARGET (2nd FROM TOP)
- 40 - A5J3-27 SPECIAL SAUCER
- 64 - A5J3-21 WHEEL 10,000
- 78 - A5J3-20 WHEEL 25,000
- 23 - A5J3-22 2 TARGETS ADVANCE MULT.
- 72 - A5J3-24 4 X BONUS
- 10 - A5J3-1 # 7 BUTTON
- 21 - A5J3-12 80,000 # 3 TARGET
- 53 - A5J3-15 2 TARGET (LEFT)
- 92 - A5J3-11 Q'DROP TARGET (TOP)
- 15 - A5J3-9 K' TARGET (BOTTOM)
- 35 - A5J3-13 CREDIT INDICATOR
- 14 - A5J3-4 SPECIAL 4-7 BUTTON
- 95 - A5J3-2 320 SPADES
- 31 - A5J3-10 WHEEL OPEN GATE
- 56 - A5J3-18 WHEEL ALL DEUCES
- 81 - A5J3-3 K' TARGET (TOP)
- 84 - A5J3-14 5 X BONUS
- 20 - A2J1-5

D) Zahlen mit \*00\* sind die Selbsteinstellungen im Spulentest.  
 Die Zahlen mit (00) sind die Selbsteinstellungen im Kontakttest.

LOOKING AT TOP OF PLAYFIELD



NOTES

1. INDICATES NOT USED
2. N/U = NOT USED ON PLAYFIELD
3. \* INDICATES AID TEST POINT
4. COIL DIODES ARE IN4004 (E-587-6) SWITCH DIODES ARE IN4148 (E-587-14) ALL CAPACITORS ARE .05 MFD (E-586-80)
5. GERMANY ONLY - CAPACITOR .01 MFD @ 500 V. (E-586-65)

PLAYFIELD A6

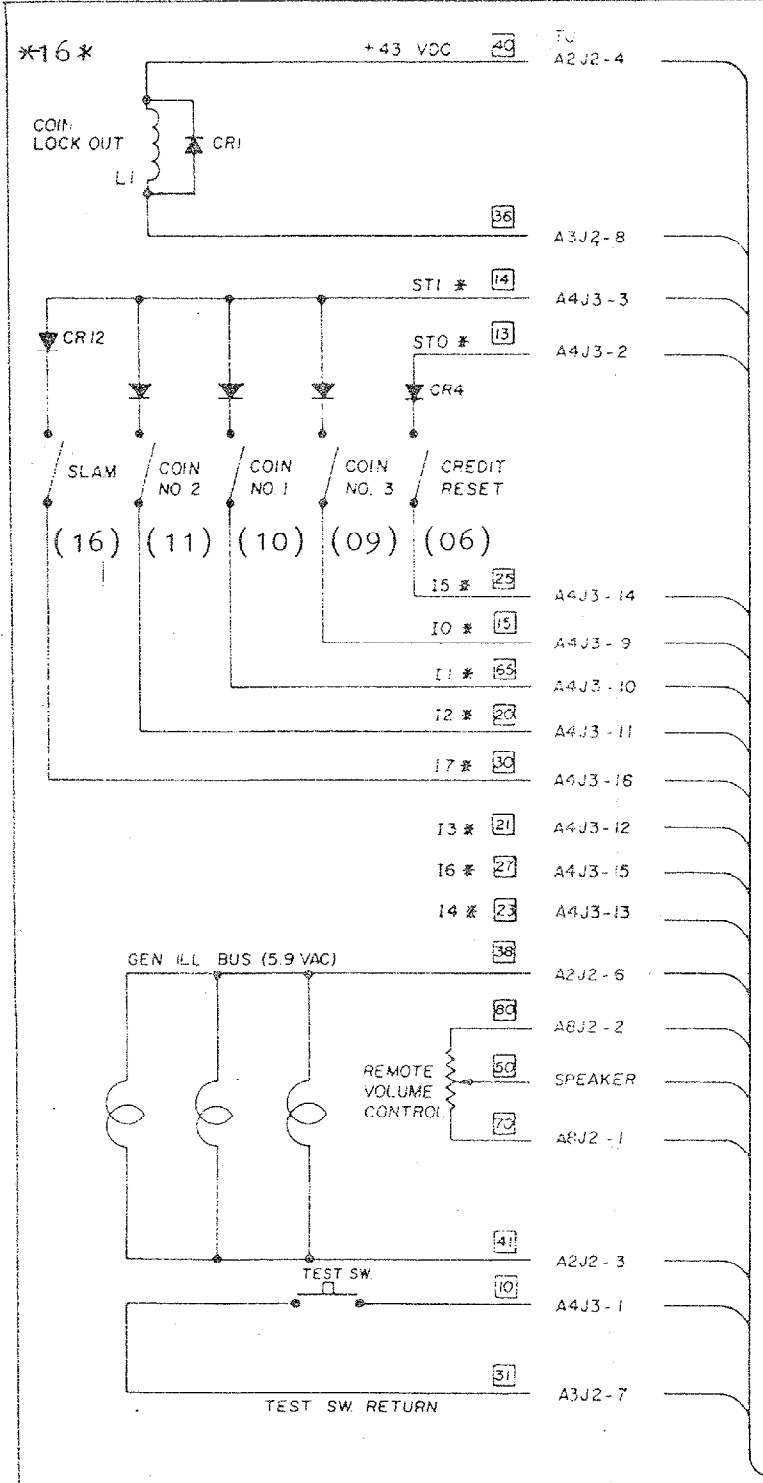
- 54 - A5J2-20 # NO 3
- 82 - A9J2-19 Q' NO 7
- 25 - A5J2-16 # NO 11
- 96 - A9J2-17 Q' NO 4
- 27 - A9J2-12 Q' NO 8
- 15 - A5J2-11 K' NO 12
- 95 - A9J2-7 Q' NO 9
- 45 - A3J2-6 Q' NO 5
- 68 - A3J2-5 Q' NO 1
- 82 - A9J2-3 Q' NO 2
- 40 - A9J2-2 Q' NO 6
- 43 - A9J2-1 Q' NO 10

- PINK - A5J2-2 K' NO 15
- 12 - A5J2-14 K' NO 13
- 23 - A5J2-15 K' NO 14
- 98 - A5J2-20 SPECIAL # 3 TARGET
- 85 - A5J2-6 2 TARGETS 50,000
- 91 - A5J2-7 2 TARGETS SPECIAL
- 60 - A5J2-1 A' NO 16
- 34 - A5J2-16 X-BALL # 3 TARGET



Spielfeldverdrahtungsplan

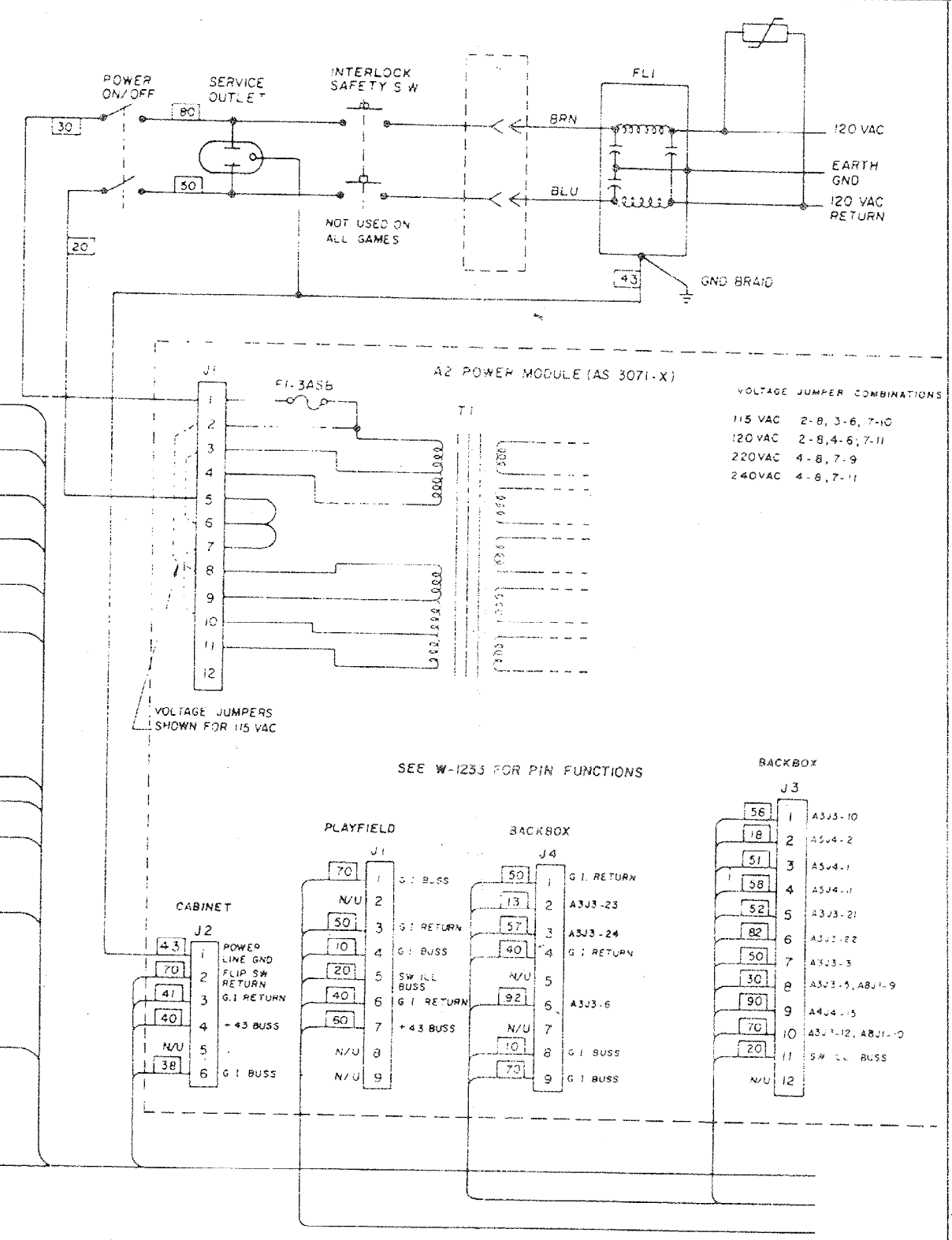
Kings of Steel



- NOTES: (CAUTION)
1. USE BALLY PART NO. E-713 FOR 115-120 VAC.
  2. USE BALLY PART NO. E-713-1 FOR 220-240 VAC.
  3. \* INDICATES AID TEST POINT.

TO	J1 PIN	TO	J1 PIN
A4J3-9	1	A4J3-3	11
A4J3-10	2	A2J2-4	15
A4J3-11	3	A3J2-8	16
A4J3-12	4	A2J2-6	17
A4J3-14	5	A2J2-3	18
A4J3-15	6	A4J3-1	19
A4J3-16	7	A3J2-7	20
A4J3-2	8	SPEAKER	9
DOOR PLUG	10	A8J2-1	12
		A8J2-2	13

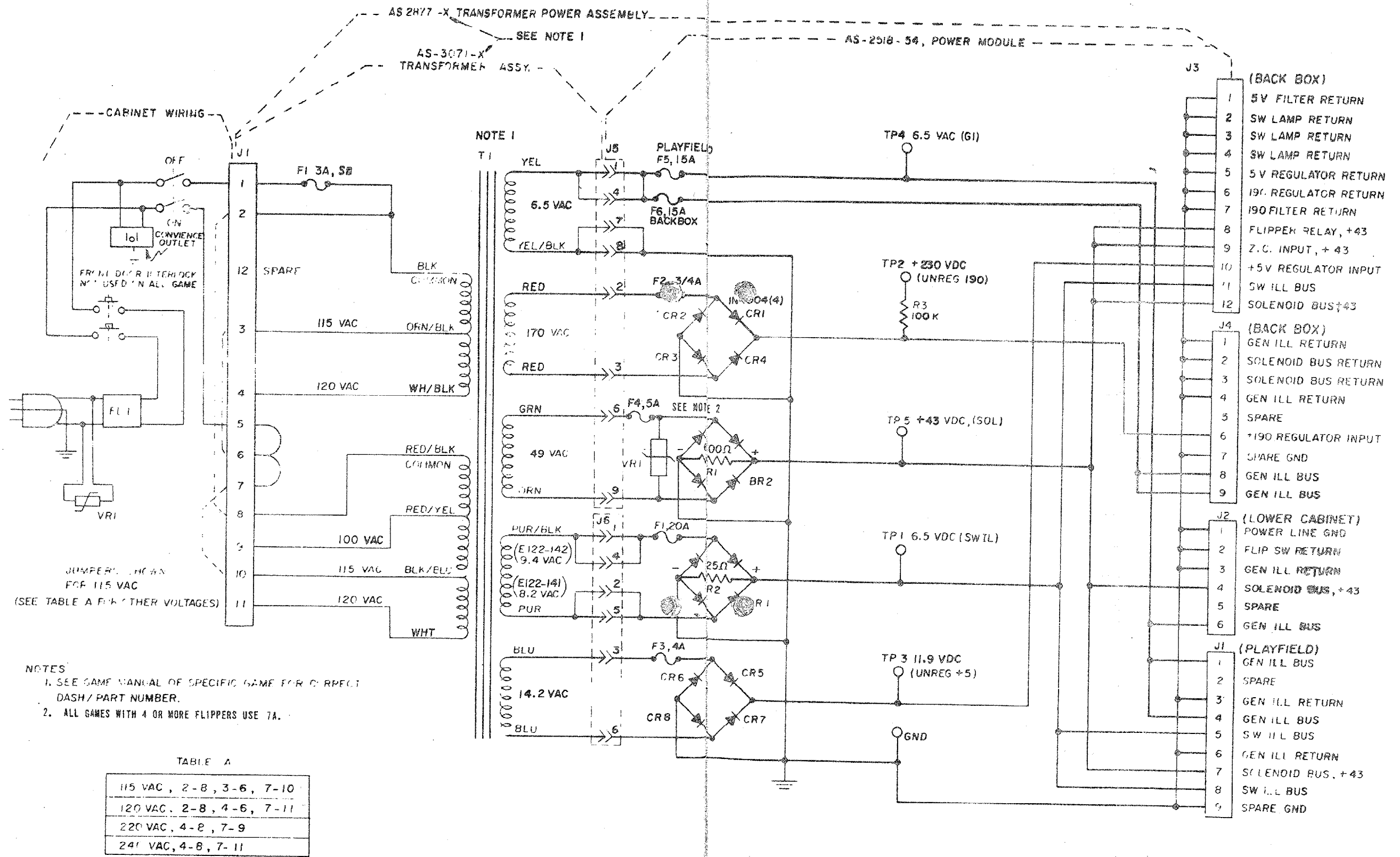
A7 CABINET ASS'Y. WIRING  
NOTE DIODES ARE IN400 (E-587-6)



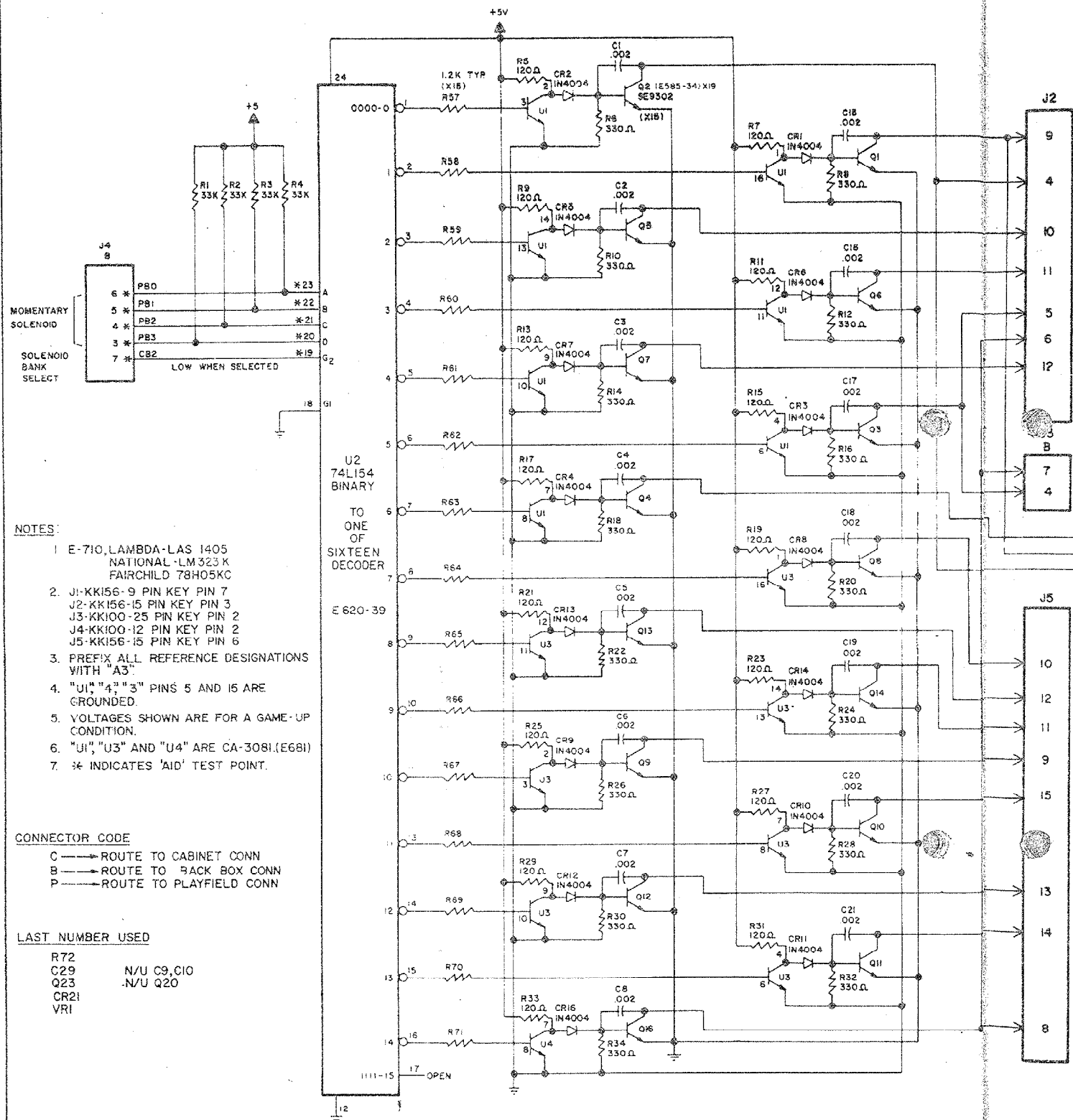
Die Zahlen mit \*00\* sind die Selbsttestnummern im Spulentest.  
Die Zahlen mit (oo) sind die Selbsttestnummern im Kontakttest.

Verdrahtung im Gehäuse  
Kings of Steel





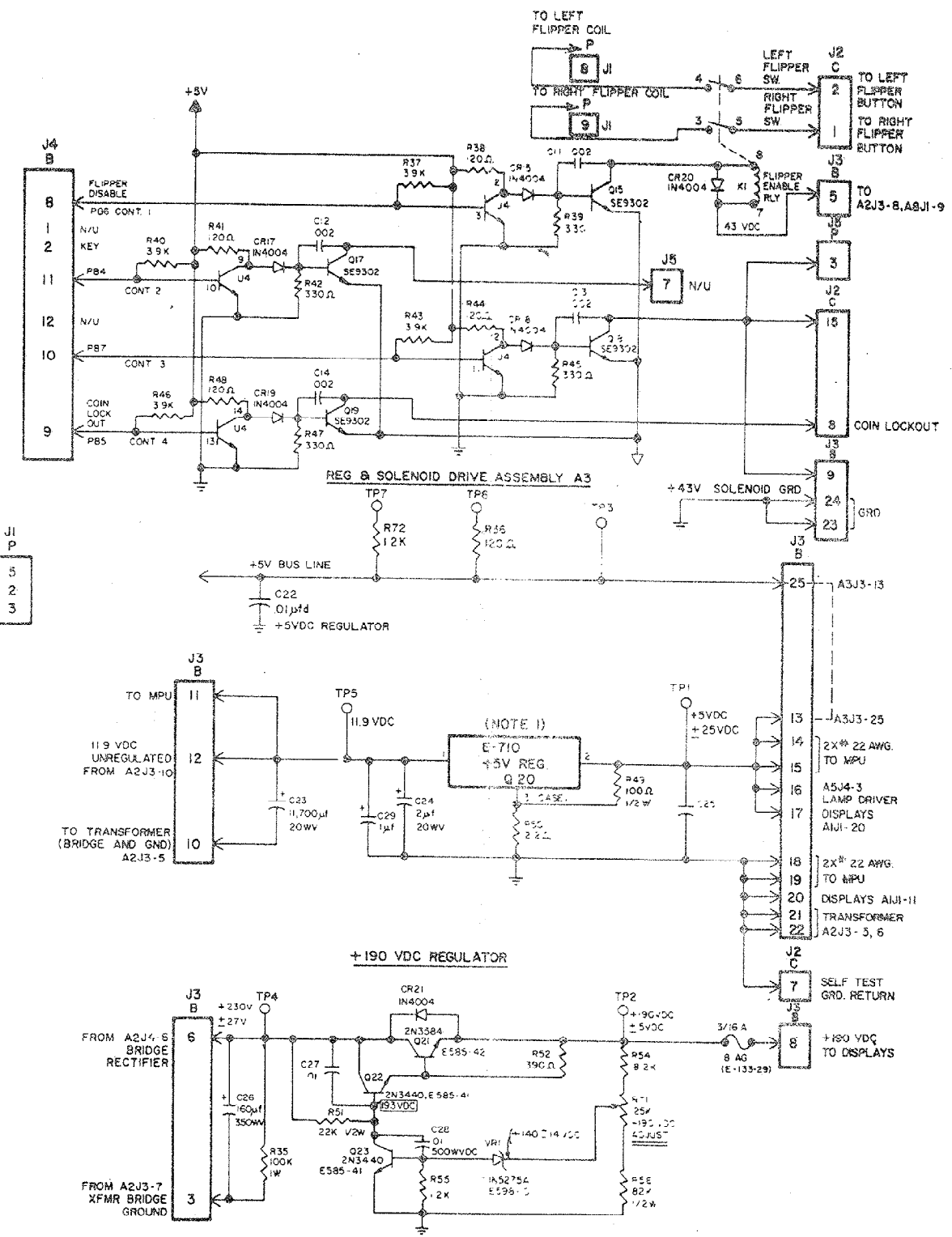
Power Supply A 2  
Kings of Steel



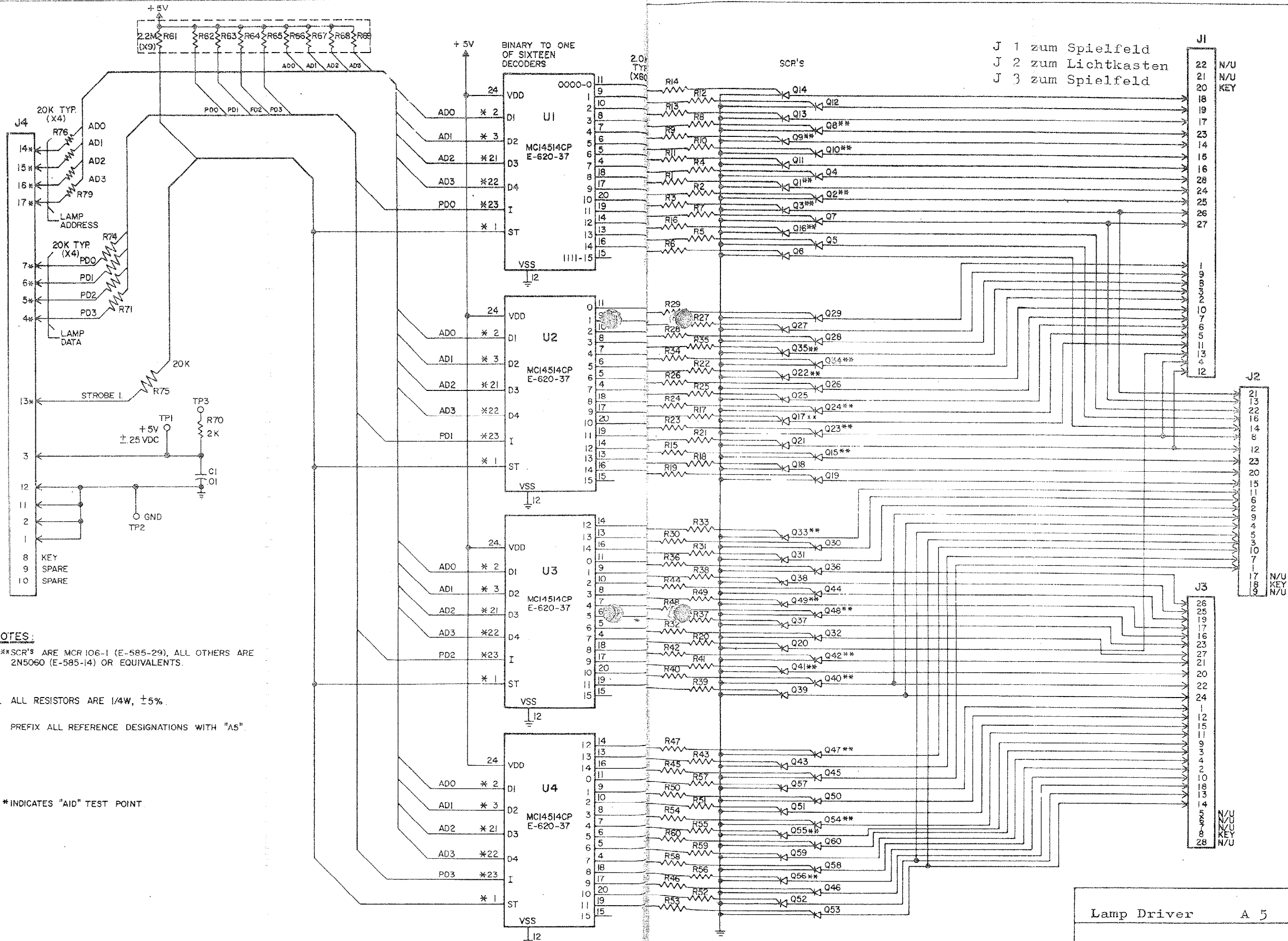
- NOTES:
- 1 E-710, LAMBDA-LAS 1405 NATIONAL-LM323K FAIRCHILD 78H05KC
  - 2 J1-KK156-9 PIN KEY PIN 7  
J2-KK156-15 PIN KEY PIN 3  
J3-KK100-25 PIN KEY PIN 2  
J4-KK100-12 PIN KEY PIN 2  
J5-KK156-15 PIN KEY PIN 6
  3. PREFIX ALL REFERENCE DESIGNATIONS WITH "A3"
  4. "U1", "U4", "U3" PINS 5 AND 15 ARE GROUNDED.
  5. VOLTAGES SHOWN ARE FOR A GAME-UP CONDITION.
  6. "U1", "U3" AND "U4" ARE CA-3081.(E681)
  7. \* INDICATES 'AID' TEST POINT.

CONNECTOR CODE  
 C → ROUTE TO CABINET CONN  
 B → ROUTE TO BACK BOX CONN  
 P → ROUTE TO PLAYFIELD CONN

LAST NUMBER USED  
 R72 N/U C9, C10  
 C29 N/U Q20  
 CR21  
 VRI

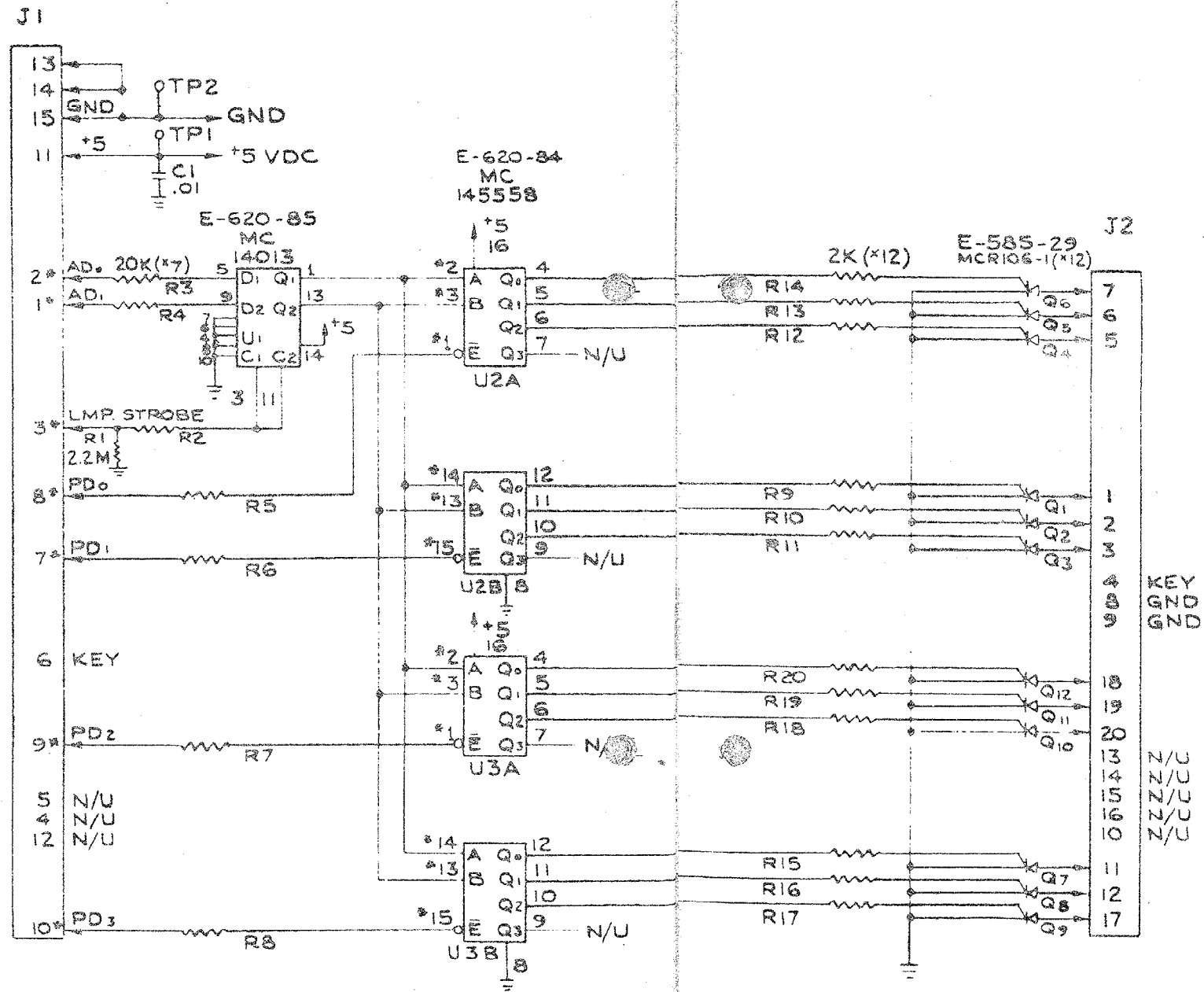


Solenoid Driver Voltage Regulator Schematic A 3  
 Kings of Steel

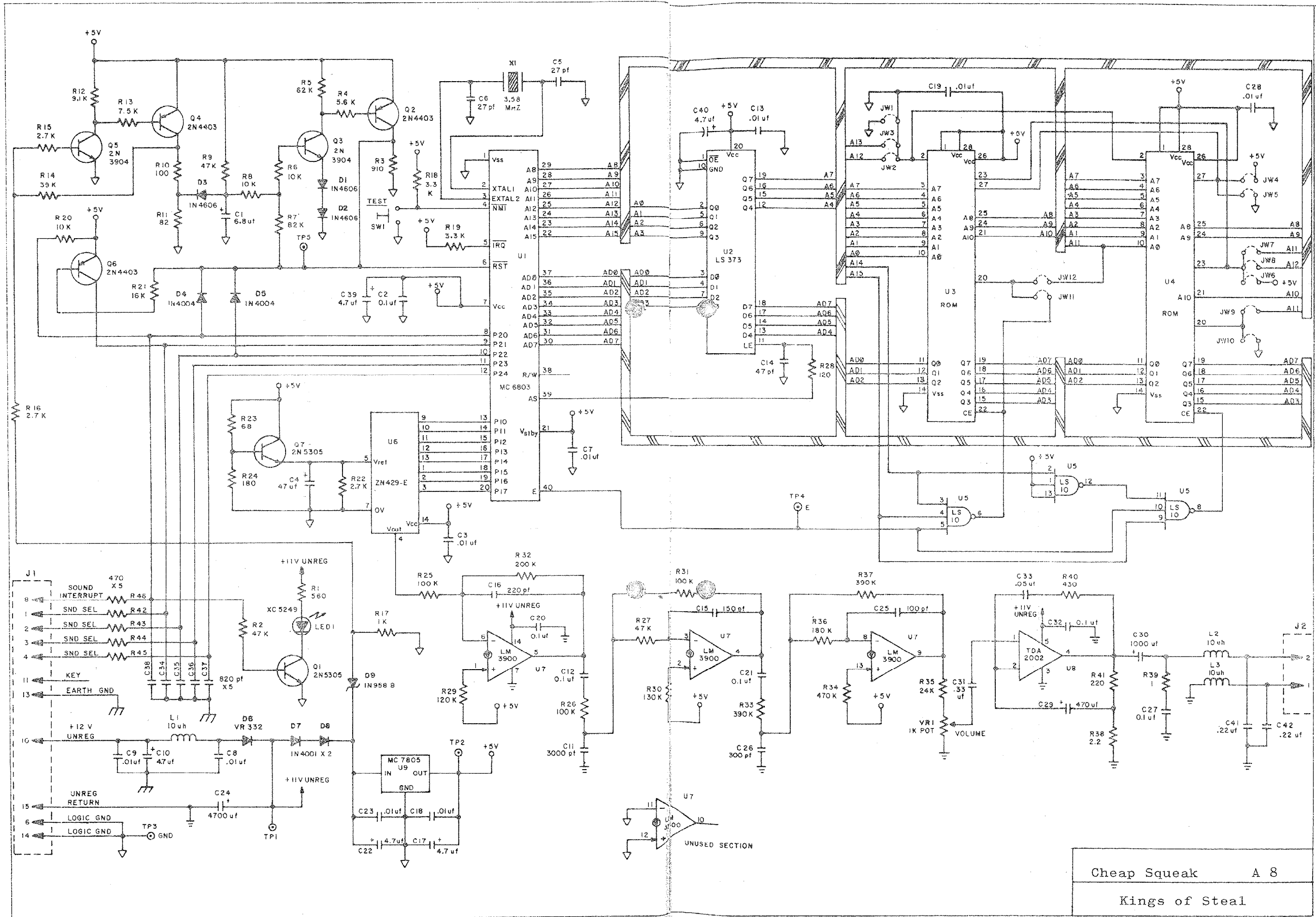


- NOTES:**
- \*\*SCR'S ARE MCR 106-1 (E-585-29), ALL OTHERS ARE 2N5060 (E-585-14) OR EQUIVALENTS.
  - ALL RESISTORS ARE 1/4W, ±5%.
  - PREFIX ALL REFERENCE DESIGNATIONS WITH "A5".
  - \*INDICATES "AID" TEST POINT.

Lamp Driver A 5  
Kings of Steel



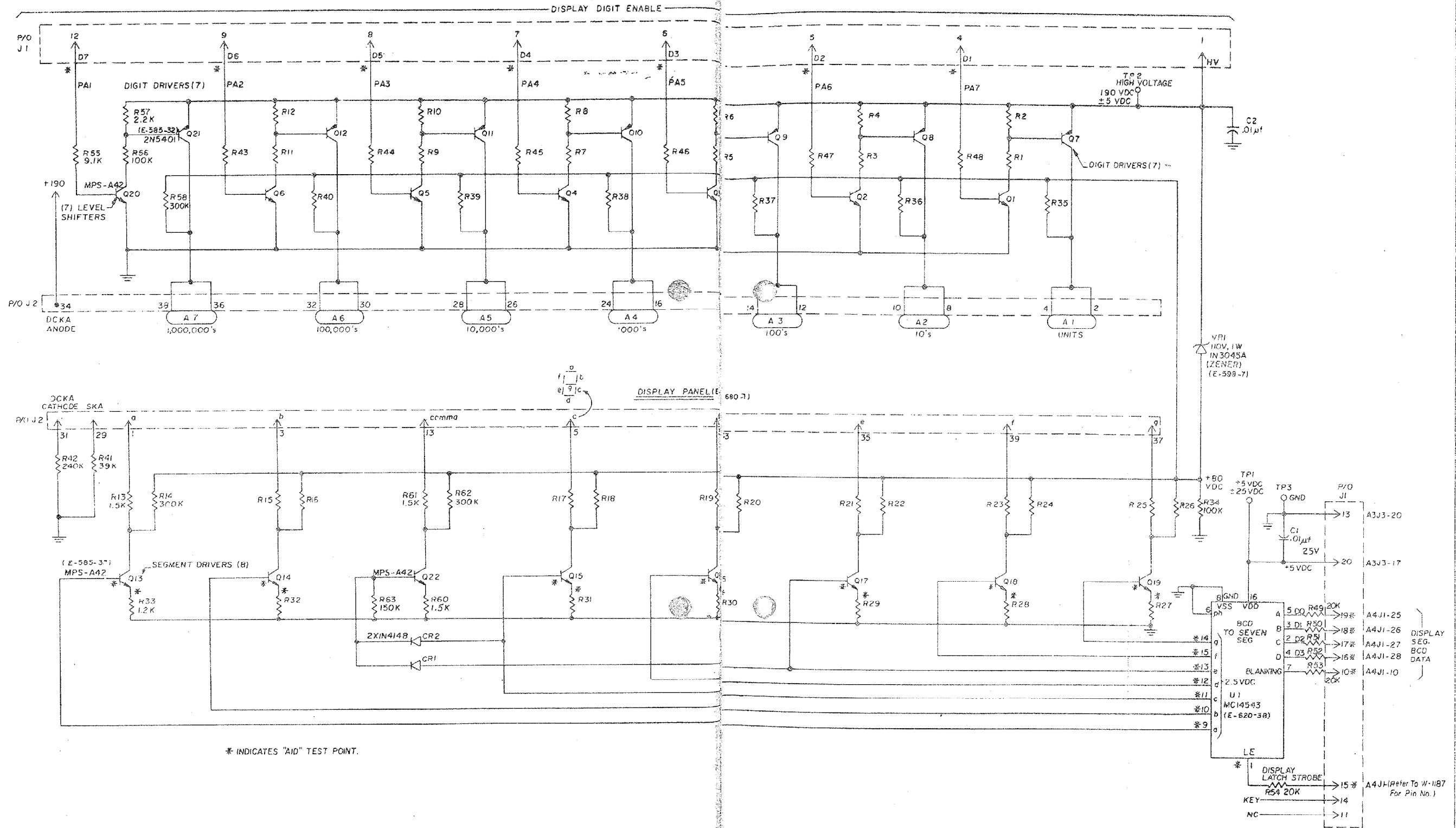
Auxiliary Lamp Driver A 9  
Kings of Steel



Cheap Squeak A 8  
Kings of Steel







7- stelliges Display A 1  
Kings of Steel