

ADDENDUM

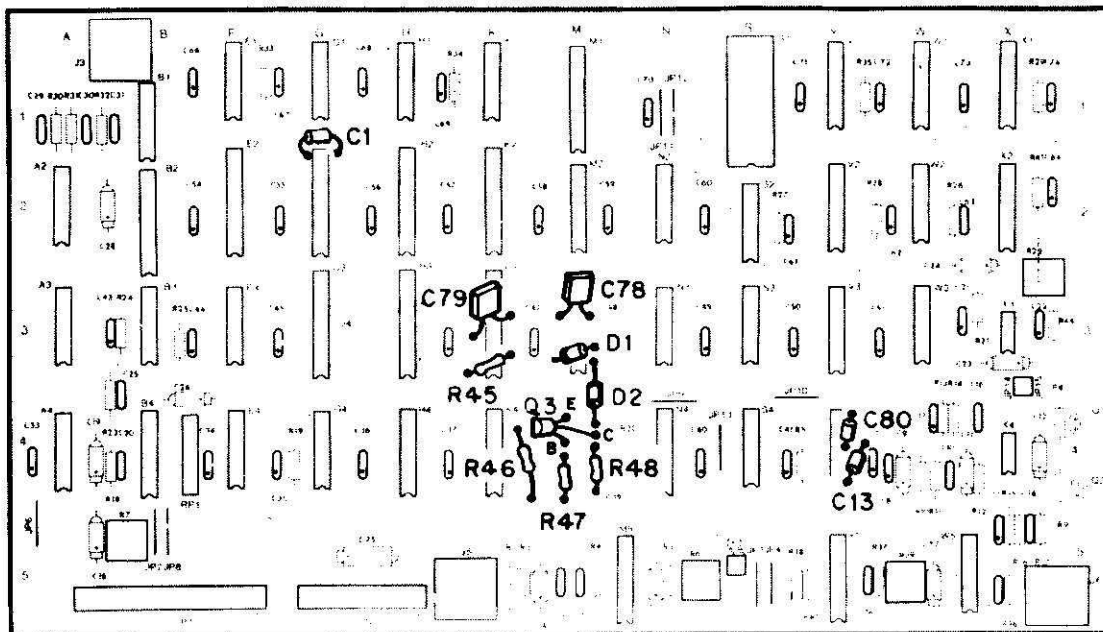
ATTACHED TO AND PART OF M.A.C.H. 3 (GAME GV-109)

GAME AS SHIPPED VARIES FROM THE INSTRUCTION MANUAL AS PRINTED

INTERFACE BOARD ASSY. (A2)  
PART NO. MA-499

1. Circuit revisions for this assembly have been implemented in this game. The following changes denoted and illustrated below will update pages 38, 39 and 40. Keep this addendum with your instruction manual for future reference.

**INTERFACE BOARD ASSY. (A2), COMPONENT LOCATION**



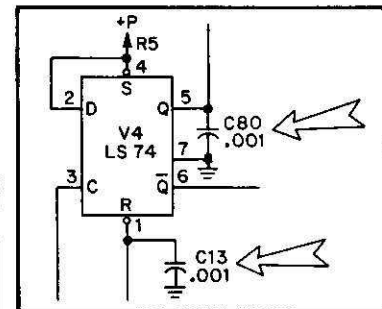
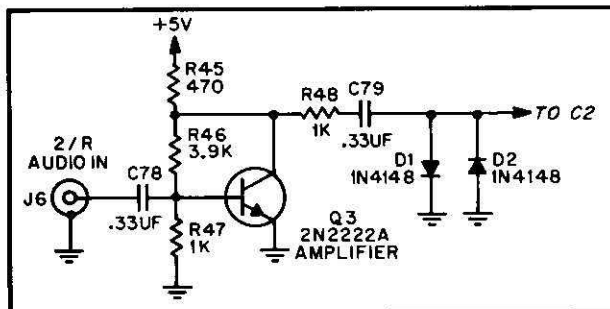
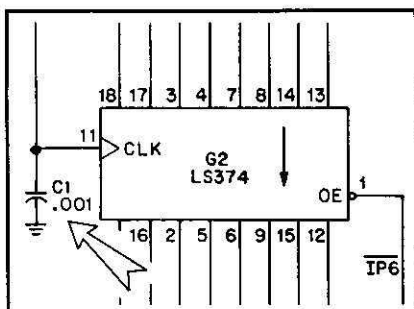
**INTERFACE BOARD ASSY. (A2), PARTS LIST**

DELETED:

C32 Capacitor, 820PF, 50V CM-AX, ±80%-20%.....XO-692

ADDED:

C1, C13, C80 Capacitor, .001UF, 50V CM-AX, ±80%-20%.....XO-695  
 C78, C79 Capacitor, .33UF, 50V CM-AX.....XO-295  
 D1, D2 Diode, 1N4148.....XO-261  
 Q3 Transistor, NPN, 2N2222A.....XO-320  
 R45 Resistor, 470 OHM, 5%, 1/4W.....XO-35  
 R46 Resistor, 3.9K OHM, 5%, 1/4W.....XO-39  
 R47, R48 Resistor, 1K OHM, 5%, 1/4W.....XO-5



### ADDENDUM

#### ATTACHED TO AND PART OF M.A.C.H. 3 (GAME GV-109) INSTRUCTION MANUAL

GAME AS SHIPPED VARIES FROM THE INSTRUCTION MANUAL AS PRINTED

1. Add the following to **VIII. GENERAL INFORMATION--C. FUSES--BOTTOM PANEL** on page 12 of the instruction manual:

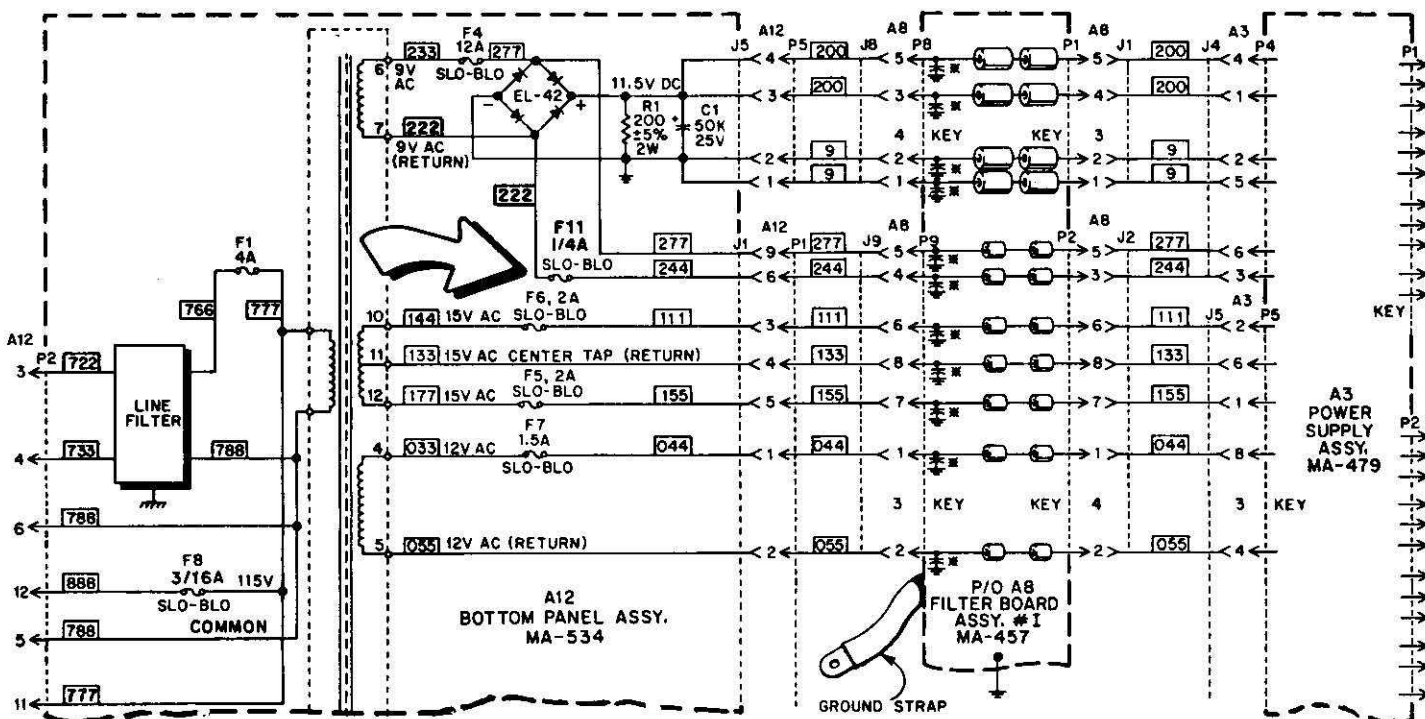
F11 9V AC

1/4 Amp SLO-BLO

2. Make the following changes as shown below in the partial illustration to the **PRIMARY POWER/FILTER BOARDS/INTERCONNECTION DIAGRAM** schematic on pages 50, 51 and 52 in the instruction manual:

(a) Add fuse F11 to the 9V AC RETURN line as shown below.

(b) Change wire color 244, between tap 7 (9V AC RETURN) on the transformer and the bridge rectifier, to wire color 222; add wire color 222 from the bridge rectifier to F11, as shown below.



VI. GAME ADJUSTMENTS/OPTIONS

A. CONTROL BOARD SWITCH ADJUSTMENTS

*\*Comp 2 to 11*

SWITCHES			LIVES/COST/COIN	1/COIN	2
1	2	3			
OFF	OFF	OFF.....	3	FREE	1 1
ON	OFF	OFF.....	3	2	1 1
OFF	ON	OFF.....	3	3	1 1
ON	ON	OFF.....	3	4	1 1
OFF	OFF	ON.....	5	2	1 1
ON	OFF	ON.....	5	3	1 1
OFF	ON	ON.....	5	4	1 1
ON	ON	ON.....	5	5	1 1

SWITCHES			BONUS	1/NEXT/DIFFICULTY
4	5	6		
OFF	OFF	OFF.....	10K	10K EASY
ON	OFF	OFF.....	10K	20K EASY
OFF	ON	OFF.....	10K	40K EASY
ON	ON	OFF.....	20K	60K EASY
OFF	OFF	ON.....	10K	10K HARD
ON	OFF	ON.....	10K	20K HARD
OFF	ON	ON.....	10K	40K HARD
ON	ON	ON.....	20K	60K HARD

SWITCH 7 \_\_\_\_\_ ATTRACT MODE SOUND  
 OFF.....NO SOUND  
 ON.....SOUND

SWITCH 8 \_\_\_\_\_ DEMO MODE  
 OFF.....NORMAL GAME PLAY  
 ON.....INFINITE LIVES

MA-554  
 ILLUMINATION  
 ASSY.  
 (UPRIGHT)

MA-1127  
 ELECTRONICS PANEL  
 ASSY.

MA-553  
 SPEAKER PANEL  
 ASSY.  
 (UPRIGHT)

MA-399  
 FRONT DOOR  
 ASSY.

MA-1125  
 CONTROL PANEL  
 ASSY.

GAME AS SHIPPED VARIES FROM THE INSTRUCTION MANUAL AS PRINTED

ATTACHED TO AND PART OF M.A.C.I.I. 3 (GAME GV-109)

ADDENDUM