

ZONE		LVR		DESCRIPTION	DATE	APPROVED

QTY REQD	CODE IDENT	PART OR IDENTIFYING NO.	NOMENCLATURE OR DESCRIPTION

UNLESS OTHERWISE SPECIFIED DIMENSIONS ARE IN INCHES TOLERANCES ARE:		CONTRACT NO.	
FRACTIONS	DECIMALS	ANGLES	
= .XX ±	= .XXX ±	±	
MATERIAL		APPROVALS	
		DATE	
		Joe M. 10/14/76	
FINISH		CHECKED	
NEXT ASSY USED ON		SCALE NAME	
APPLICATION		DO NOT SCALE DRAWING	

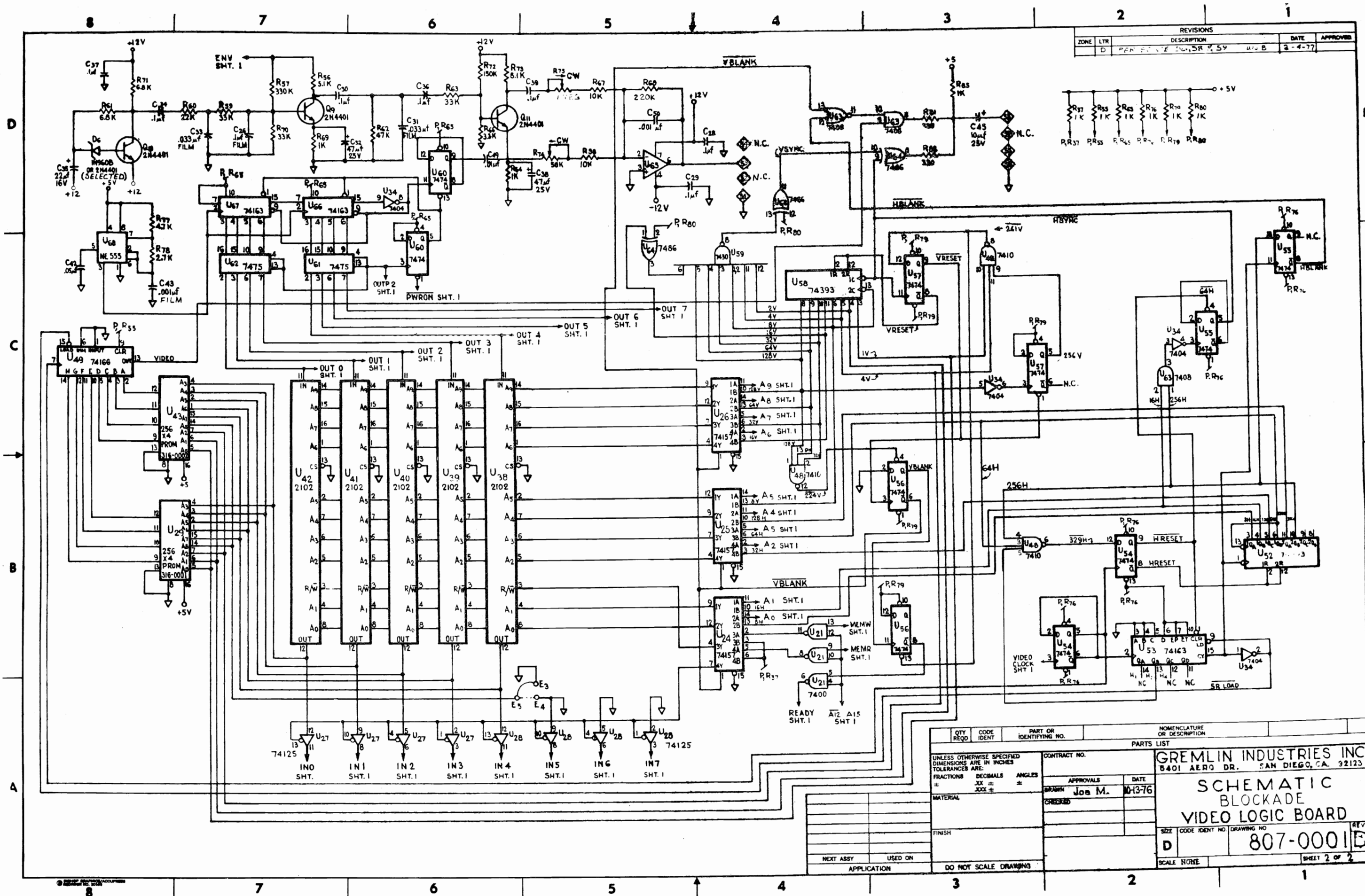
  

PARTS LIST		NOMENCLATURE OR DESCRIPTION	
		GREMLIN INDUSTRIES INC.	
		8401 AERO DR. SAN DIEGO, CA. 92123	
		SCHEMATIC	
		BLOCKADE	
		VIDEO LOGIC BOARD	
SIZE	CODE IDENT NO	DRAWING NO	RE.
D		807-0001	1
SCALE NAME		SHEET 1 OF 2	

NOTES:  
 1. ON CONNECTOR PINS 17, 27, 39, 44, 48, 52, 57 ARE PLANK KEYING PINS.

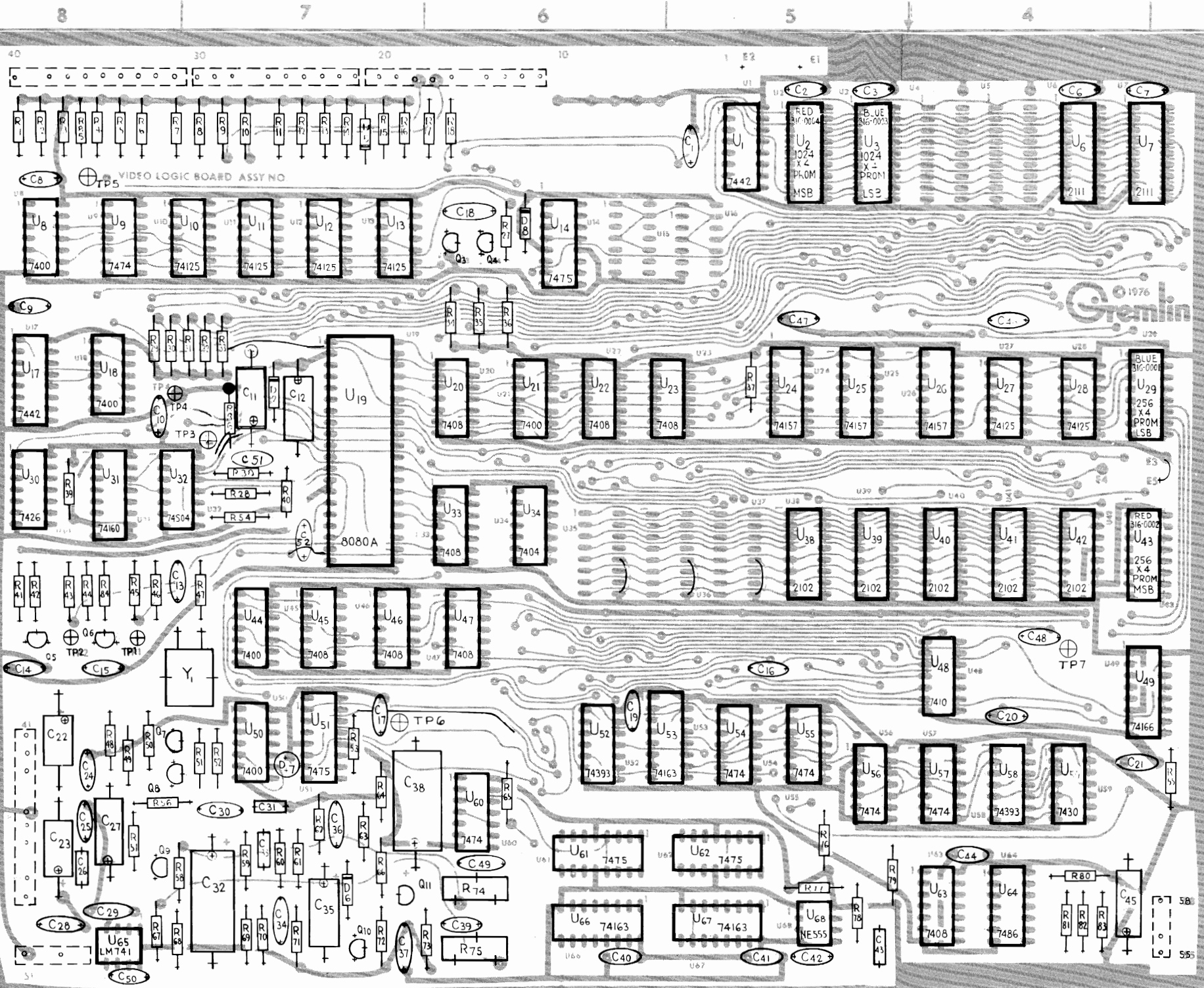
807-0001 D

REVISIONS			
ZONE	LTR	DESCRIPTION	DATE
D		PERFORME 10-15-76	2-4-77



QTY REQD		CODE IDENT		PART OR IDENTIFYING NO.		NOMENCLATURE OR DESCRIPTION	
PARTS LIST							
UNLESS OTHERWISE SPECIFIED DIMENSIONS ARE IN INCHES TOLERANCES ARE:				CONTRACT NO.			
FRACTIONS	DECIMALS	ANGLES		APPROVALS	DATE	GREMLIN INDUSTRIES INC.	
±	±	±		DRAWN	10-13-76	8401 AERO DR. SAN DIEGO, CA. 92123	
MATERIAL				CHECKED		SCHEMATIC	
						BLOCKADE	
						VIDEO LOGIC BOARD	
FINISH						SIZE	CODE IDENT NO. DRAWING NO.
						D	807-0001D
NEXT ASSY	USED ON					SCALE NOTE	SHEET 2 OF 2

807-0001 D



REVISIONS				
ZONE	LTR	DESCRIPTION	DATE	APPROVED
D		PER ECN'S 56 58 & 59	4/28/77	

TP1-TP7	7	211 - 0004	TEST POINT PINS
Y	1	230 - 0006	XTAL 20.790 MHZ CLK
U2U3 (REF. ONLY)	2	213 - 0002	SKT. 18 PIN DUAL INLN
	2	212 - 0004	CONN. MALE 4 PIN
	4	212 - 0003	CONN. MALE 10 PIN
PCB1	1	170 - 0057B	PCB B/A LOGIC
Q8	1	482 - 0006	XISTOR 2N 4403
Q4-Q7-Q9-Q11	7	482 - 0014	XISTOR 2N 4401
Q3	1	482 - 0010	XISTOR PE 8050
D7	1	390 - 0003	L.E.D. RED
D6	1	481 - 0003	DIODE ZENER IN960B
D5	1	481 - 0001	DIODE IN 4002
D2	1	481 - 0008	DIODE ZENER IN5231
D8	1	481 - 0006	DIODE IN914 OR IN4148
C43	1	152 - 0007	CAP. F. .001 M 250 V
C32 C38	2	150 - 0012	CAP. E. .47 M 25 V
C31 C33	2	152 - 0015	CAP. F. .033 M 250 V
C11 C27 C35	3	150 - 0015	CAP. E. .22 M 16 V
C26	1	152 - 0001	CAP. F. .1 M 100 V
C16 C22 C23 C45	4	150 - 0004	CAP. E. .10 M 25 V
C50	1	151 - 0008	CAP. CER. .001 M 50 V
C49 C51	2	151 - 0011	CAP. CER. .01 M 50 V
C28 C30 C34 C36 C37 C39 C40	8	151 - 0012	CAP. CER. .1 M 50 V
C13	1	151 - 0005	CAP. CER. 680 P 50 V
C46-C48 C52	4	151 - 0001	CAP. CER. .05 M 50 V
C6-C10 C25 C40-C42 C44	10	151 - 0001	CAP. CER. .05 M 50 V
C1-C3 C4-C17 C19-C21 C24	11	151 - 0001	CAP. CER. .05 M 50 V
R75	1	475 - 0002	RES. 1 MEG OHM CTS
R74	1	475 - 0008	RES. 50 K OHM CTS
R68	1	471 - 0224	RES. 220 K OHM 1/2 W 5%
R58	1	471 - 0222	RES. 22 K OHM 1/2 W 5%
R79	1	471 - 0272	RES. 27 K OHM 1/2 W 5%
R62	1	471 - 0473	RES. 47 K OHM 1/2 W 5%
R72	1	471 - 0154	RES. 150 K OHM 1/2 W 5%
R77	1	471 - 0472	RES. 47 K OHM 1/2 W 5%
R61 R71	2	471 - 0682	RES. 68 K OHM 1/2 W
R59 R63 R66 R70	4	471 - 0333	RES. 33 K OHM 1/2 W
R57	1	471 - 0334	RES. 330 K OHM 1/2 W
R53	1	471 - 0101	RES. 100 OHM 1/2 W
R52	1	471 - 0471	RES. 470 OHM 1/2 W
R49	1	471 - 0150	RES. 15 OHM 1/2 W
R48 R51 R56 R73	4	471 - 0512	RES. 51 K OHM 1/2 W
R47 R41 R81 R82	4	471 - 0331	RES. 330 OHM 1/2 W
R43 R45	2	471 - 0220	RES. 22 OHM 1/2 W
R42 R28 R64 R54 R86	5	471 - 0221	RES. 220 OHM 1/2 W
R58 R67	2	471 - 0103	RES. 10 K OHM 1/2 W
R29 R36 R60	9	471 - 0223	RES. 22 K OHM 1/2 W
R47 R80 R83 R41 R44	5	471 - 0102	RES. 1 K OHM 1/2 W
R64 R65 R69 R76 R79 R85	6	471 - 0102	RES. 1 K OHM 1/2 W
R1 R18 R37 R39 R40 R50 R55	23	471 - 0102	RES. 1 K OHM 1/2 W 5%
U3	1	316 - 0003	I.C. 1024X4 PROM LSB
U43	1	316 - 0002	I.C. 256X4 PROM MSB
U38-U42	5	315 - 0015	I.C. 2102 RAM (500 NS)
U6-U7	2	315 - 0018	I.C. 2111 RAM (500 NS)
U68	1	314 - 0001	I.C. TIMER NE 555
U65	1	313 - 0004	I.C. LM741
U64	1	314 - 0022	I.C. 7486
U59	1	314 - 0020	I.C. 7430
U53 U64 U67	3	314 - 0038	I.C. 74163
U52 U58	2	314 - 0030	I.C. 74393
U49	1	314 - 0039	I.C. 74166
U48	1	314 - 0010	I.C. 7410
U14 U51 U61 U62	4	314 - 0021	I.C. 7475
U34	1	314 - 0015	I.C. 7404
U32	1	314 - 0046	I.C. 74504
U31	1	314 - 0032	I.C. 74160
U30	1	314 - 0031	I.C. 7426
U29	1	316 - 0001	I.C. 256X4 PROM LSB
U24-U26	3	314 - 0029	I.C. 74157
U20 U22 U23 U24 U25 U26 U27	8	314 - 0012	I.C. 7408
U19	1	315 - 0014	I.C. 8080A CPU
U10-U13 U27 U28	6	314 - 0017	I.C. 74125
U9 U54-U57 U60	6	314 - 0006	I.C. 7474
U8 U18 U21 U44 U50	5	314 - 0009	I.C. 7400
U2	1	316 - 0004	I.C. 1024X4 PROM MSB
U17	2	314 - 0011	I.C. 7442

ITEM NO.	QTY.	PART OR IDENTIFYING NO.	NOMENCLATURE OR DESCRIPTION
PARTS LIST			
UNLESS OTHERWISE SPECIFIED DIMENSIONS ARE IN INCHES TOLERANCES ARE:		CONTRACT NO.	
FRACTIONS	DECIMALS	ANGLES	
±	.XX ±	±	
	.XXX ±		
MATERIAL		APPROVALS	DATE
FINISH		DRAWN Joe M	11-5-76
NEXT ASSY		CHECKED	
USED ON		GREMLIN INDUSTRIES INC.	
APPLICATION		1401 AERO DR. SAN DIEGO, CA. 92123	
DO NOT SCALE DRAWING		VIDEO LOGIC BOARD BLOCKADE PARTS OVERLAY	
SCALE 2 X		SIZE CODE IDENT NO. DRAWING NO. REV	
SHEET 11 OF		D 807-0001 D	

7. ON CONNECTOR PINS 15 27 39 44 48 52 54 57 ARE BLANK KEYING PINS.  
 6. OMIT U4 U5 U15 U16 U35 U36 U37 R19-R26 C4 C5 Q1 Q2 D1 D3 D4  
 5. LAST D NO. USED D8  
 4. LAST C NO. USED C52  
 3. LAST Q NO. USED Q11  
 2. LAST R NO. USED R86  
 1. LAST U NO. USED U68

NOTES: